

RESOLUTE

MARIAN HOUSE ANNUAL REPORT 2023



WHO WE ARE

Marian House is a transitional and permanent housing and support services program for homeless women and their children, located in the Better Waverly neighborhood of Baltimore City. Founded in 1982 by the Sisters of Mercy and the School Sisters of Notre Dame, Marian House provides a variety of supportive housing options including the following programs.

Marian House I is the transitional and intensive rehabilitation phase for single women experiencing homelessness, most of whom are coming out of incarceration, a residential recovery program, or other temporary and/or unstable environment. Employment is the goal for all women in Marian House I. During the Marian House I experience, women are provided with a structured community-living environment and an integrated program of care, including:

- Private rooms, meals and personal supplies
- Individual and group therapy
- Substance abuse treatment
- Case Management, including referrals for medical care
- Life skills training
- Employment support, ranging from expungement to interviewing skills and referral to training programs
- Pre- GED and GED education
- A financial literacy class and savings program

Upon completion of the first phase of programming and securing employment, women are given the opportunity to move into a more independent living environment in the second phase of the program – **Marian House II**. Marian House II allows women to continue to live in a community setting with other women who are striving to achieve similar goals for independent and healthy living. The homes offer private bedrooms, shared kitchens and living rooms, less structure, and fewer housemates than Marian House I. In this phase of the program, women continue to receive supportive services such as counseling, case management, education, and employment assistance as they pursue their rehabilitation goals and work toward independent living in the community.

The Family Transitional Housing Program serves women with children and those who are ready and able to reunite with their children. Residents of this program have access to Marian House I supportive services, such as tutoring and enrichment services and employment assistance. In addition, they receive case management and family and child therapy. Referrals for this program are taken from shelters in the community, treatment programs, as well as women who are initially enrolled in Marian House I.

Marian House also provides residences for women and families in our **Permanent Supportive Housing Program**, in buildings owned and managed by Marian House and in rented homes and apartments in the community. Residents of our permanent supportive housing program receive rental subsidies based on their income, and ongoing case management assistance.

Benevolent Baskets is a social enterprise and workforce development program of Marian House. Benevolent Baskets provides work experience and business skills to Marian House women as they design, produce, and sell handicrafts and themed gift baskets. The program provides an important steppingstone as our women strive to enter/reenter the workforce and at local craft fairs and farmers' markets. The program paused services at the end of the fiscal year.

WELCOME LETTER

Dear Friends,

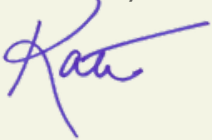
In fiscal year 2023, Marian House residents learned to be resolute through difficulties and to celebrate everyday wins. The headlines thrust us all through many emotions throughout the year. A highlight was seeing Kentaji Brown Jackson named the first black woman to serve on the Supreme Court. Marian House understands how poorly women fare in the judicial system. We work to ensure the returning citizens we serve are met with love, patience, and professionalism at Marian House. Seeing a Black woman in the highest court of law gives the women we serve resolve and hope.

We are grateful for your partnership as well as the support of our sponsoring communities, the School Sisters of Notre Dame and the Sisters of Mercy. We hire staff committed to our core values and mission, and work each day to ensure our services to women uphold these values.

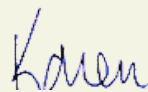
Karen Albert as our board chair led us well this year and we are grateful for her leadership. She spear-headed an anniversary celebration for our 41st anniversary. One of the highlights for me that night was seeing a former resident who came to celebrate her 19th work anniversary with us. She found that job while a resident of Marian House 19 years ago and is still happily employed. She is living proof – our work WORKS!

Your support makes this all possible! All of our celebrations and victories, you share a large part in each of them because of your generosity.

Sincerely,



KATIE ALLSTON, LCSW-C
PRESIDENT & CEO



KAREN ALBERT
CHAIR, BOARD OF DIRECTORS



Resident Camping Trip

OUR YEAR IN REVIEW

Our new fiscal year kicked off with summer celebrations for the residents with a cookout in the courtyard and revving up for the exciting Ravens Raffle for friends and donors. Residence of MH I begin training in the neighborhood for our 5K. The work they do here addresses all aspects – body, mind, and soul.

In August, we helped the residents and their children prepare for back-to-school with supplies and haircuts from local volunteers. Of course, September is the 5K, our largest fundraiser of the year, and we had over 60 sponsors, and nearly 500 participants. The residents also went camping again with Katie. We take great pride in offering bucket list experiences for women as they are charting their new beginning.

The fall ushered in a field trip to the Woman King movie for book club attendees, our annual Thanksgiving meal served by the brothers from the Alpha Phi Alpha Fraternity, so much more. As the calendar closed, generosity from those who love us was poured out onto Marian House residents from every program.



5K with MH Alum extended family



Ladies at Spa Day



Resident Crab Feast



Resident family at Holiday Party



Residents & Staff at Thanksgiving



Volunteers at Serve Day



41st Anniversary Dinner at CopperShark



Staff Retreat



The Woman King Field Trip

The new calendar year brought celebrations and community support from corporations, schools, and churches as soon as the weather warmed. Volunteer projects of gardening and workshops for our residents were held to affirm and encourage them in their journey to wholeness and recovery.

We celebrated our 41st anniversary with a lovely event at the Copper Shark, coordinated by our Board Chair, Karen Albert. Over 80 people came out and celebrated with us. In May, with Spring in full effect we celebrated the moms we serve with presents and pampering activities donated by friends like you. We closed out June with visits from the McAuley Scholars and our annual staff retreat.

We are grateful for the many volunteers, donors, and friends who supported our work with your time, talent, and treasure. You changed lives for the better in partnering with us.

MARIAN HOUSE SCHOLARSHIP PROGRAM

Marian House has a permanently restricted education fund, the Asta Gauvey/Sr. Augusta Education fund. This donor-restricted fund is set aside to establish a permanent endowment and serves as seed money that will generate income to support the scholarship programs of the organization. This fund was established through the generous donation of two donors. Susan Gauvey, Board Chair (1991-2011) established the fund through a donation in honor of her mother, Asta Gauvey. Sr. Augusta Reilly RSM, former Executive Director of Marian House (1987 - 2003), asked gifts in her honor be donated to the fund upon her retirement. These initial gifts created the permanently restricted fund. Income generated by these endowments is spent on the education of current or former residents.

The scholarship program is available to alumnae of the Marian House programs. Examples of the use of the funds include, but are not limited to the following:

- Tuition Assistance for classes at local colleges
- Course materials such as textbooks
- Certification courses such as ServSafe Certification

In FY23, Marian House is proud to announce the following women have succeeded in their educational endeavors:

Scholarships Awarded FY 23 (Fall 2023; Spring 2024)

- Stacie Forest;
University of Baltimore; Business (graduated)
- Jennifer Keane;
BCCC; Nursing prerequisites
- Cameisha Lipscomb;
Coppin State University; graduate studies in Criminal Justice
- Marilyn Russell;
Morgan State University; graduate studies in Landscape Architecture

Total awarded \$15,450 in FY 23.



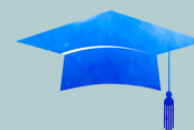
\$175,000

AWARDED IN SCHOLARSHIPS
AND OTHER FORMS OF
FINANCIAL ASSISTANCE
BY THE MARIAN HOUSE
SCHOLARSHIP PROGRAM



**OVER 60
WOMEN**

CHOSE TO FURTHER
THEIR EDUCATION



9

ASSOCIATES
DEGREES

17

BACHELOR'S
DEGREES

14

ADVANCED
DEGREES

23

TRADE SCHOOL LICENSURE
AND CERTIFICATES

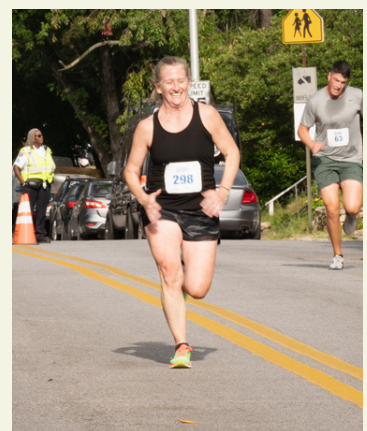


14TH ANNUAL RACE TO EMBRACE INDEPENDENCE 5K

We had yet another successful Race to Embrace Independence 5K on September 29, 2022. Our Marian House women and children thank you for your continued support of our annual fundraiser! Over 465 registrants and 42 teams participated in the race. Hundreds of people packed Gorsuch Avenue for a morning of fun. The weather was perfect and our race village had everything runners needed with donated water, donuts, fruit, coffee, snacks, and fun activities. Denise Koch from WJZ-TV (Emcee), Katie Allston, (President & CEO) and Adrienne (resident speaker) - all gave heartfelt remarks. Jackie Szimanski (volunteer trainer) led a fun warm-up with DJ Rome rocking everyone's favorite tunes.

Awards were distributed by event co-chairs Megan Ferris & Mel Tamsiti alongside Denise Koch. We had a new race route this year, starting & ending at Marian House. The hard work of many volunteers helped us raise nearly \$30,000 in peer-to-peer donations. Special thanks to all those who donated raffle prizes to us; we raised nearly \$2,000 with 20 amazing prizes, including tickets to a Ravens home game. Our event wouldn't have been possible without our long list of race sponsors who demonstrated great commitment to Marian House. Our sponsorship pledges exceeded \$89,000.

Marian House is fiercely grateful to the 2022 5K Planning Committee, Committee Chairs and race Co-Chairs, whose tireless work made this event possible. You are all champions in our eyes! The residents were so encouraged by the presence of the runners and supporters that morning. All proceeds support Marian House, our programming, and our residents.





Aegon Transamerica Foundation
Atruent
Baltimore Ravens
Brown Advisory Charitable Foundation
Canusa Hershman Recycling LLC
Canusa Paper & Packaging LLC
CareFirst



SPONSORS

Centric Business Systems Inc.
Chase Brexton Health Care
Chesapeake Community Advisors, Inc.
Chesapeake Employers Insurance Co.
Clearview Consulting Inc.
Coca-Cola Consolidated
Constellium
Douglas Electric & Lighting Inc.
DTC Inc.
Dynamo Electric
Eastern Savings Bank
Ellin & Tucker
Enterprise Community Investment Inc.
Fairfax Station Enterprises, LLC
Foundry Wealth Advisors, LLC
Gant Brunnett Architects
Gordon Feinblatt LLC
Heritage Properties, Inc.
Homes for America, Inc
Hunt Valley Tile & Stone LLC.
Janney Montgomery Scott LLC
Johns Hopkins School of Nursing
Johns Hopkins University
Kelly Benefits
KPMG LLP
Main Street Waverly
Mary Kraft Staffing & HR Solutions
McCormick & Company, Inc.
MECU
Mercy Medical Center
National Cooperative Bank
Niles, Barton, & Wilmer
Pink Dog Digital
PNC Financial Services Group
Pricewaterhouse Coopers, LLP
Rosedale Federal Savings and Loan Association
Saffer Plumbing and Heating Inc
School Sisters of Notre Dame - Atlantic Midwest Province
Simple IT Care
Sisters of Mercy South Central Community
T. Rowe Price
The Boyd-Britton Group
The Whiting-Turner Contracting Company, Inc.
Truist
Tydings & Rosenberg LLP
Waverly Main Street
WesBanco Bank

WHO WE SERVE

Since our founding, Marian House has served over **4,600** women and children. In FY23, Marian House served **394** women and children.



65
women
served in
Transitional
Housing
(MHI & II)

34
women
served in
Family
Transitional
Housing

109
women
served in
Permanent
Housing

64
children
served in
Family
Transitional
Housing

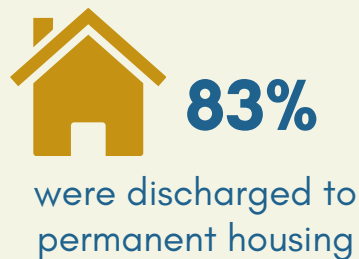
122
children
served in
Permanent
Housing

196
CHILDREN



IMPACT

Of the **24** women who exited the Transitional Housing Program in FY23:



In the Permanent Housing Program:

5 women were unemployed (and not permanently disabled) at the start of the year, and gained employment during the course of the year

85% of women employed at the start of the year maintained their employment during the course of the year

FINANCIALS

AUDITED

Public Support & Revenue

Federal Government	\$1,572,211
Non-Federal Government	896,790
Contributions & Non-Government Grants	298,405
Contributions with Donor Restrictions	769,690
Client Fees	516,487
Special Events - Net of Fees	112,996
Other	6,641

Total Operating Support **\$4,305,427**

Expenses

Program Services	\$3,406,679
General & Administrative	475,156
Fundraising	320,960

Total Expenses **\$4,202,795**

Net Income From Operations **\$29,565**

Less Depreciation	(445,360)
Contributions restricted for non-operations this year	132,197
Investment Income Gain/Loss	285,115
Change in Net Assets	(57,613)

Assets

Cash and Receivables	\$1,221,773
Investments at Fair Value	2,839,045
Property & Equipment Net	10,825,006

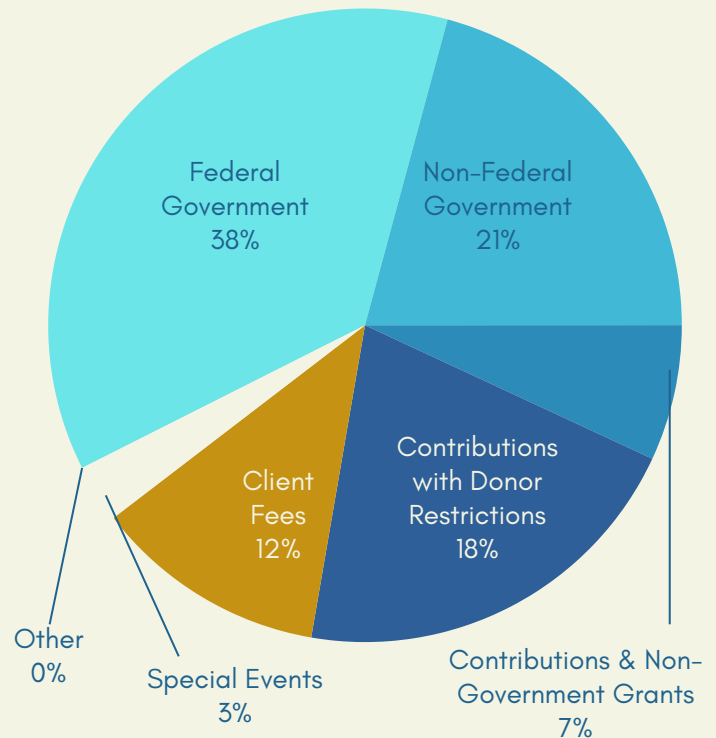
Total Assets **\$14,885,824**

Liabilities & Net Assets

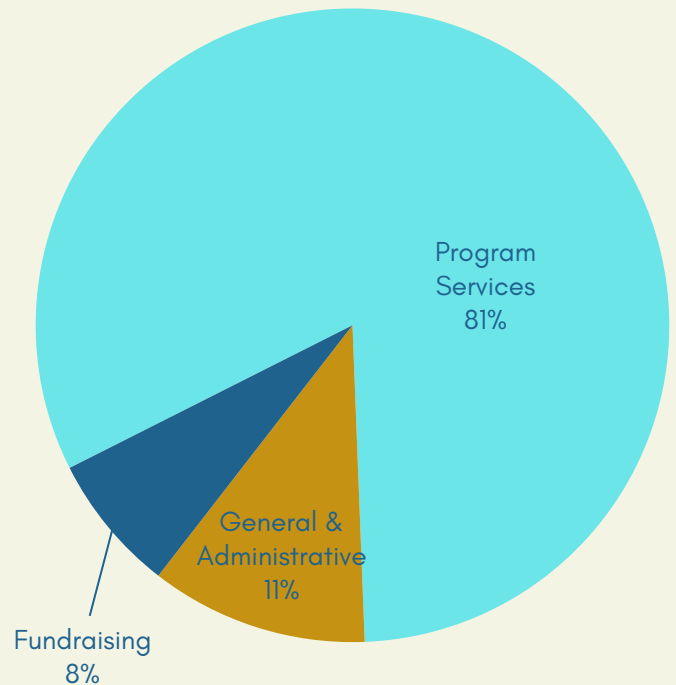
Liabilities	\$1,545,427
Net Assets	13,340,397

Total Liabilities & Net Assets **\$14,885,824**

REVENUE



EXPENSES



BOARD

Karen Albert, Chair
Constellium

Sr. Catherine (Missy) Gugerty, SSND, Secretary
School Sisters of Notre Dame

Don Mattran, Treasurer
Foundry Wealth Advisors

Carrie Schreiber, Vice Chair
Truist

Meredith Tyler, Vice Chair
Sustainable Innovation Co

Claudette V. Booth
University of Baltimore

Demetria Boyd
Total Wine

Alison Brown
Community College of Baltimore County

Jeffrey Connolly
Enterprise Community Asset Management, Inc.

Sr. Fran Demarco, RSM
Mercy Medical Center

Anne Fader
T. Rowe Price

Sr. Kathleen Feeley, SSND
School Sisters of Notre Dame

Megan Ferris
McCormick & Company

Ed Fortunato
Constellation Energy

Derek Hardesty
KPMG

Novlette Houghton
Maryland Volunteer Lawyer Service

Anita Hilson
Baltimore School of the Arts

Kerianne P. Kemmerzell
Tydings & Rosenberg LLP

Cheryl Moore-Thomas, Ph.D., NCC
Loyola University

Katie O'Brien
Whiting-Turner

Victoria Semanie
Seven Stones Life Coaching, LLC

Eleanor Smith
EBS Consulting

Ryan E. Smith
Goodwill Industries

Sr. Sue Weetenkamp, RSM
Sisters of Mercy

Nazish Weaver
CareFirst

CORPORATE BOARD

Sr. Pat Coward, RSM

Sr. Paula Dukehart, SSND

Sr. Margaret Malone, SSND

Sr. Mary Anne Smith, RSM

STAFF LEADERSHIP

Katie Allston, LCSW-C
President & CEO

Peter McIver
Chief Operations Officer

Gina Jenkins Weaver, LCSW-C
Chief Program Officer

Psalms Rojas, MSW
Chief Administrative Officer

Phyllis Ham-Middleton, LCPC
Chief Program Officer

Tobi Morris
Chief Advancement Officer

Full staff list available on marianhouse.org

OUR MISSION

Marian House is a holistic, healing community for women and their children who are in need of housing and support services. We provide a safe, sober, and loving environment that challenges women to respect and love themselves, confront emotional and socioeconomic barriers, and transition to stable and independent lives.

OUR VISION

Marian House strengthens our society by unlocking the potential found within the women we serve.

OUR VALUES

Marian House values the innate dignity of each human being. Within a culture of respect and understanding of the human condition, the values of patience, trust, honesty, and integrity direct all of our interactions and endeavors. Marian House is committed to equity and inclusion. We value diversity of thought and honor individual identity which includes race, color, national origin, gender identity, sexuality, class, and religion.



School Sisters
of Notre Dame



Sisters of
Mercy

Hermanas de la
Misericordia

Marian House
949 Gorsuch Avenue
Baltimore, MD 21218
410-467-4121

www.marianhouse.org

